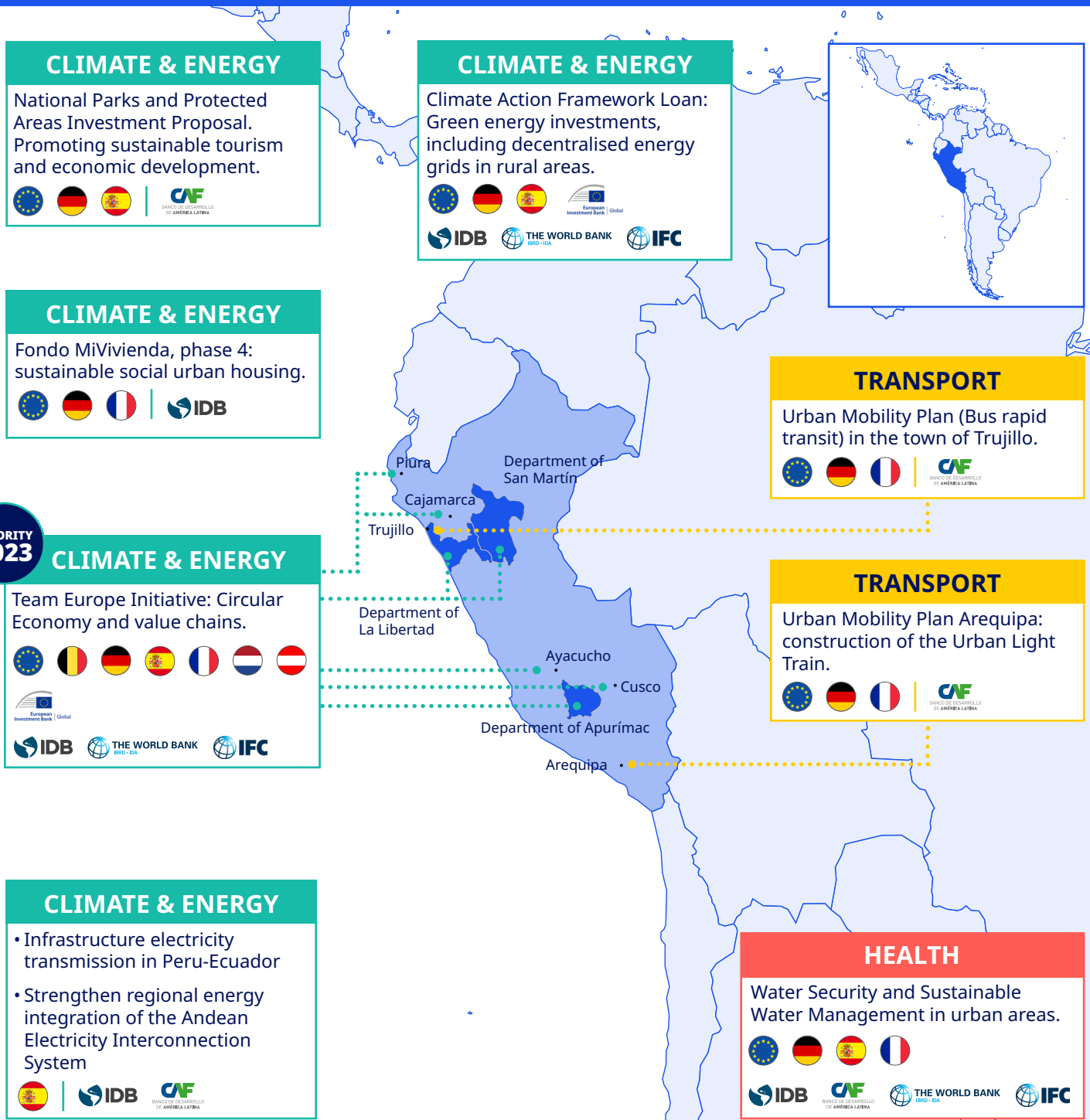


EU-Peru: Country project examples

#GlobalGateway #TeamEurope

July 2023



These outputs do not capture the whole of the Team Europe engagement in country. They capture concrete infrastructure investments under Global Gateway. They will be accompanied by soft measures in a 360° approach, so as to improve the policy, regulatory and business environment, develop skills, foster innovation and transfer technology.

The boundaries and names shown and the designations used on this map do not imply official endorsement or acceptance by the European Union.

Source: European Commission – Eurostat/GISCO