

INTERNATIONAL
LAND
COALITION



UNEVEN GROUND

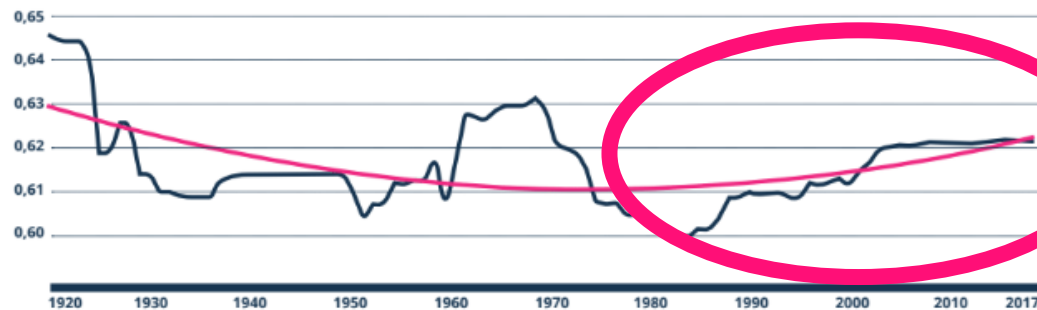
**LAND INEQUALITY AT THE HEART OF UNEQUAL SOCIETIES
RESEARCH FINDINGS FROM THE LAND INEQUALITY INITIATIVE**

Outline – 3 core messages

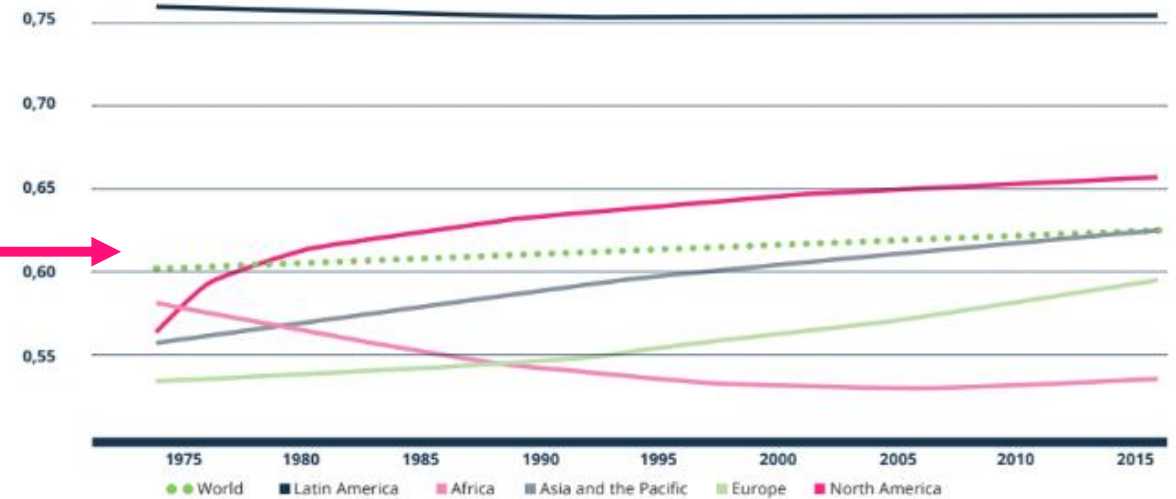
- **Land is (shockingly) more unequal than we think**
- **The centrality of land inequality, it affects all of us**
- **The urgent need to act on land inequality for more resilient, sustainable and equitable societies**

Land inequality - the shocking reality

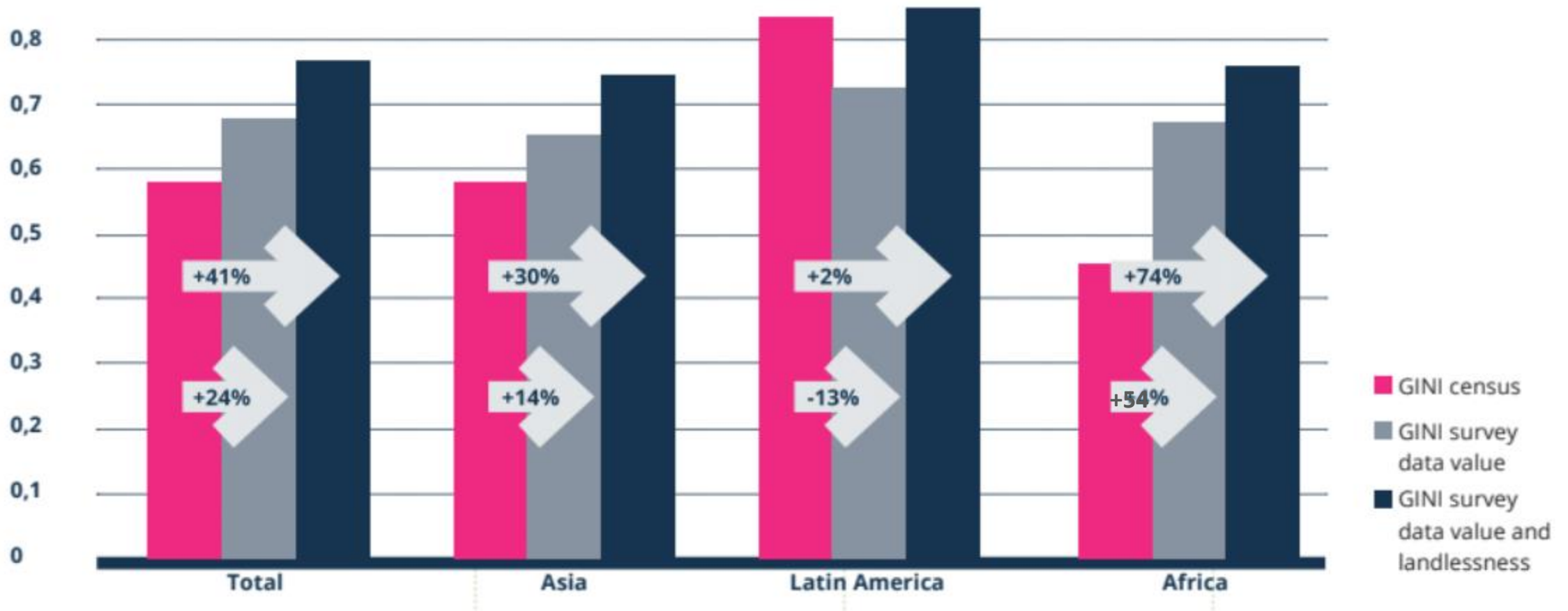
Land inequality is increasing in all regions



Source: calculations by authors, based on various sources (FAO, WB, ...)

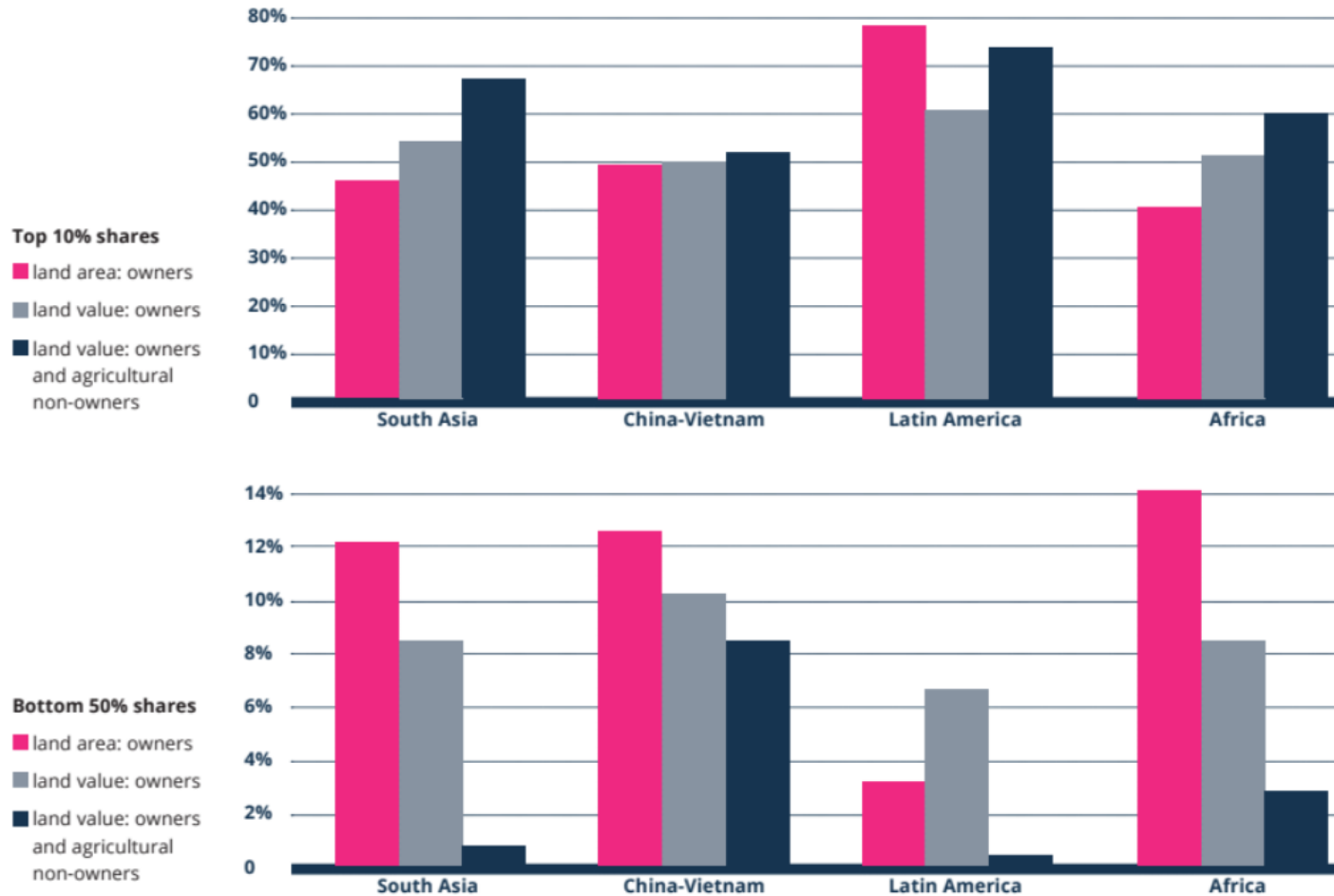


Land inequality has been underestimated, according to new methodologies



Source: calculations by authors, based on Bauluz et al. (2020)

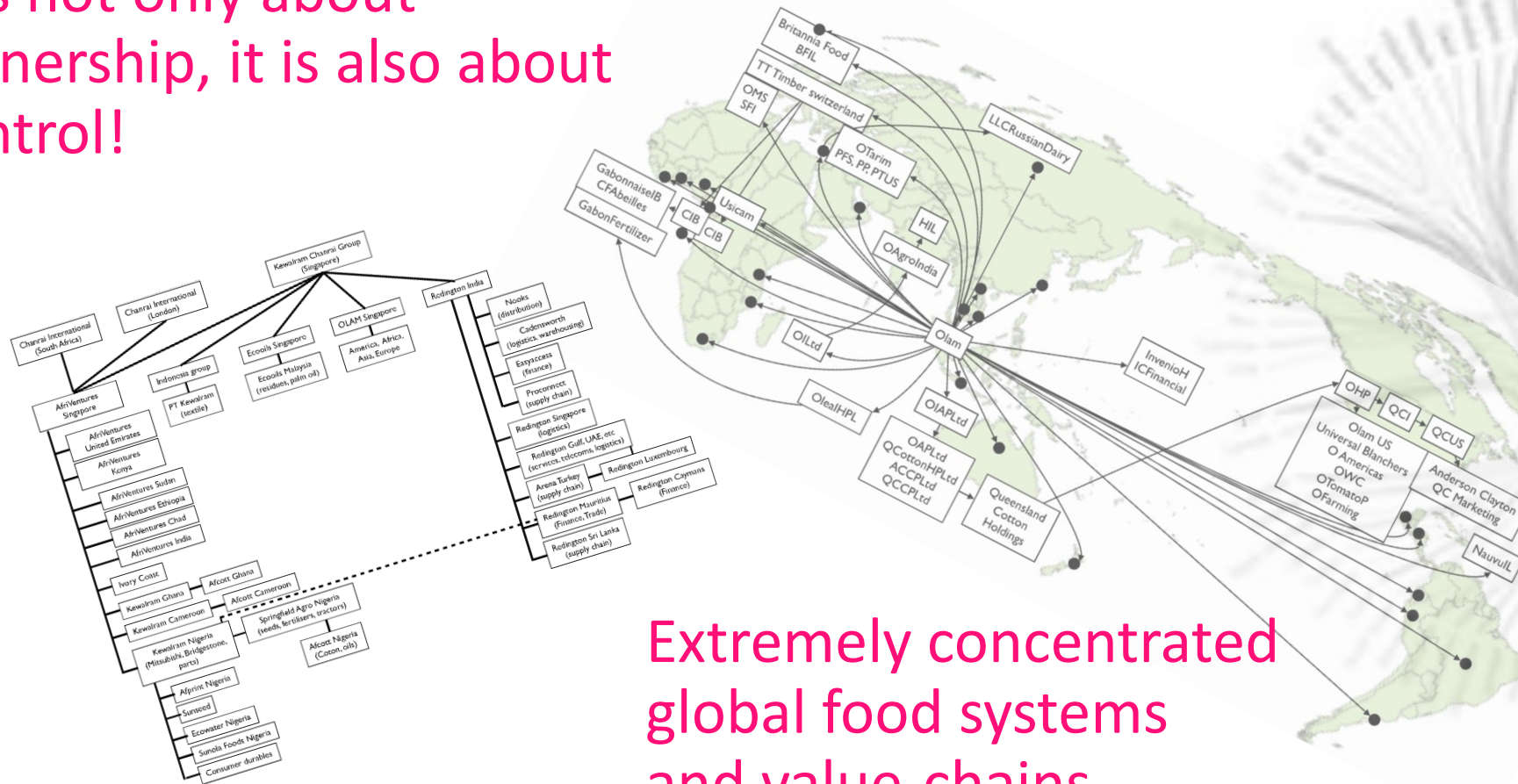
The top 10%, owns 70%; the bottom 50%, owns 3%



Source: Bauluz et al. (2020)

Hidden hands – land concentration is increasingly opaque

It is not only about ownership, it is also about control!



Extremely concentrated
global food systems
and value-chains

Hidden hands – the unseen drivers of land inequality

“ “ *The largest 1 percent of farms in the world operate more than 70 percent of the world’s farmland*
(Lowder et al., 2019, v)

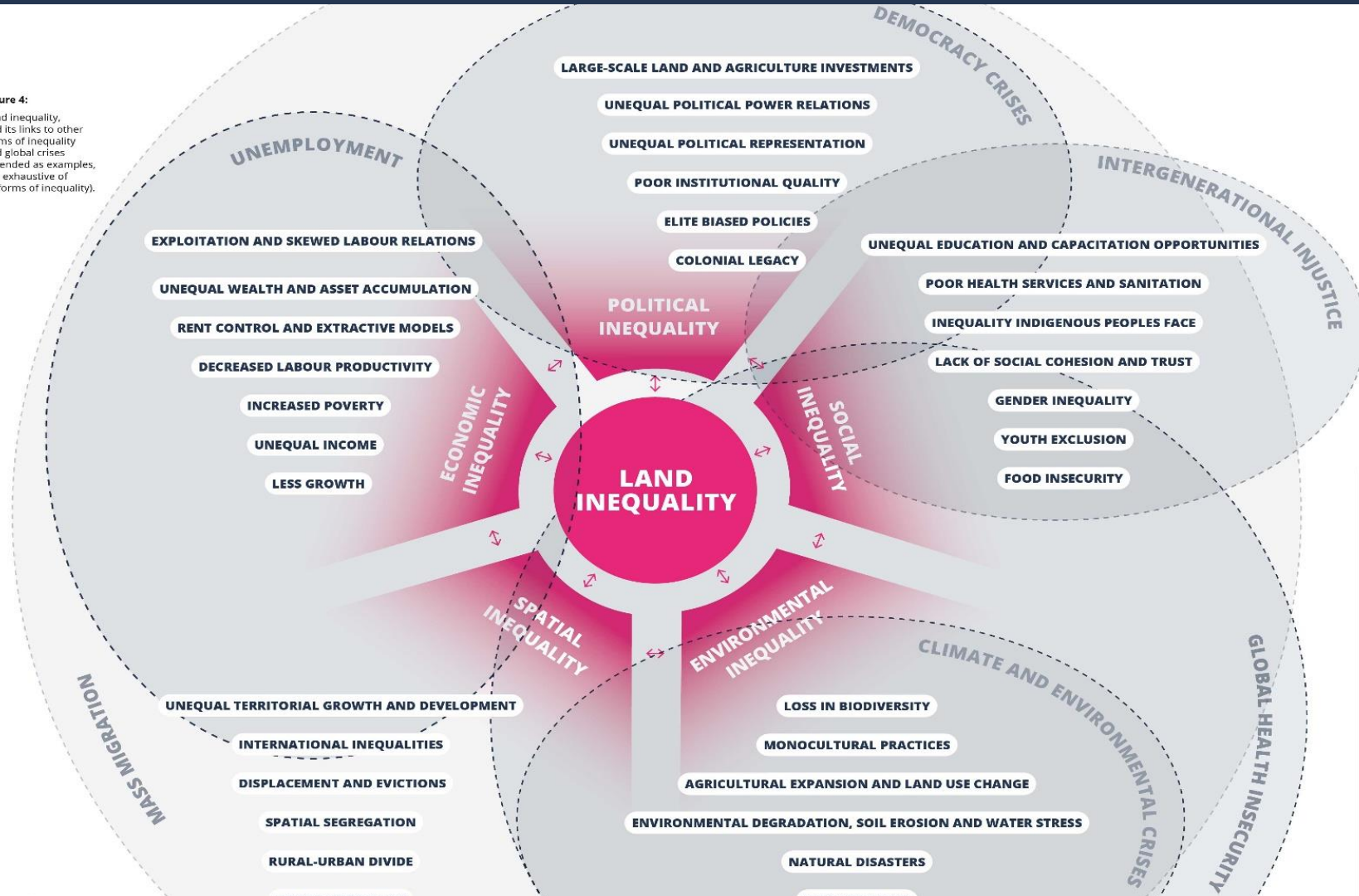
“ “ *Taking into consideration all farmers in South Africa (commercial and non-commercial), it is estimated that only 0.28% of farms produce around 80% of the value of agricultural production*
(Wegerif & Anseeuw, 2020)

Why land inequality matters?

Land inequality is central to other inequalities and global crises

It affects all of us!

Figure 4:
Land inequality, and its links to other forms of inequality and global crises (intended as examples, not exhaustive of all forms of inequality).



The urgent need to act on land equality

- principles and solutions for effective change



The urgent need to act on land equality

- principles and solutions for effective change

- Change will be hard, but not impossible
- Transforming power relations re ownership, use and control of land
- Addressing land inequality based on broad social consensus on development and sustainability model
- To keep land high on the policy agenda!!!



UNEVEN GROUND



<https://www.unevenground.org>